

Answers: [6.1.2.12 Lab - Manage Virtual Memory in Windows 7 and Vista](#)

Introduction

In this lab, you will customize virtual memory settings.

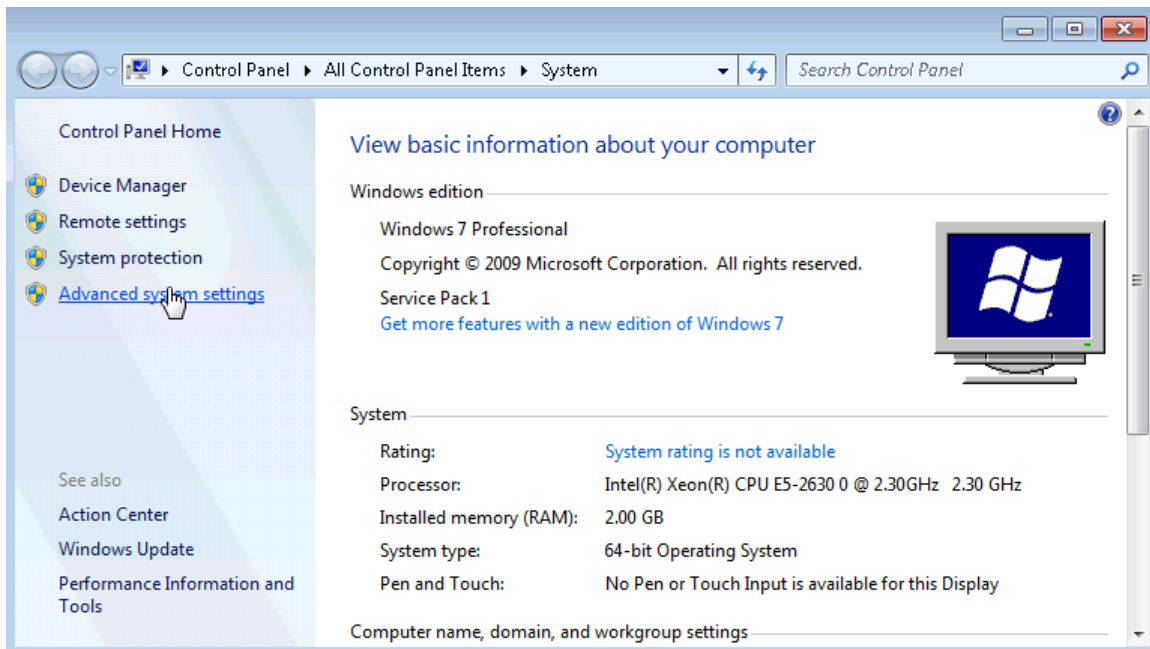
Recommended Equipment

- A computer with Windows 7 or Vista installed
- The hard drive must have two or more partitions.

Note: At least 2GB of free space is recommended on the second partition.

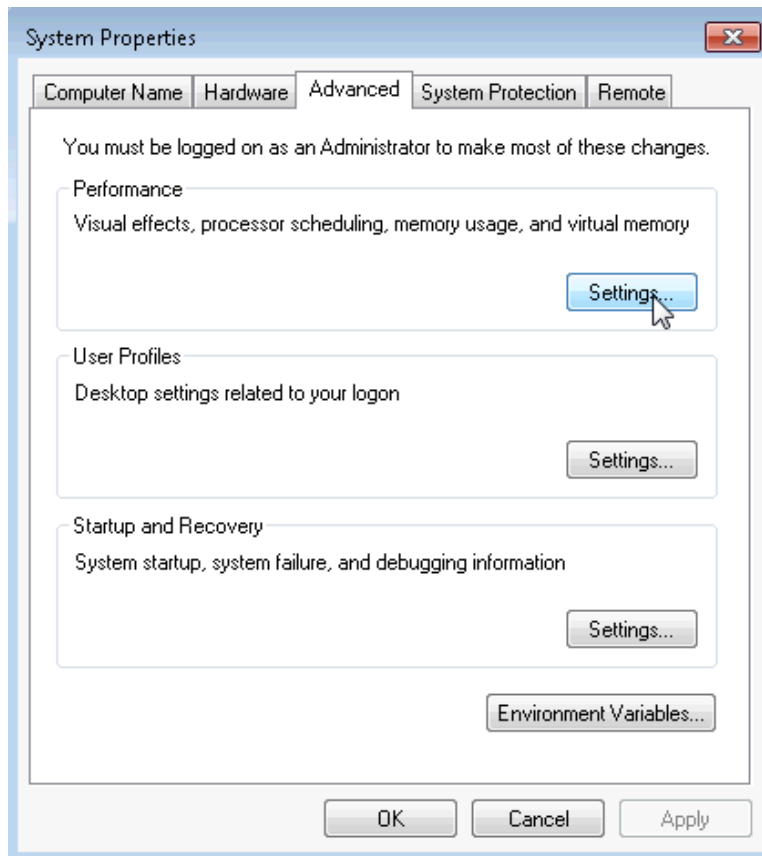
Step 1: Open System Properties

- Click **Start** > right-click **Computer** > **Properties** > **Advanced system settings**.



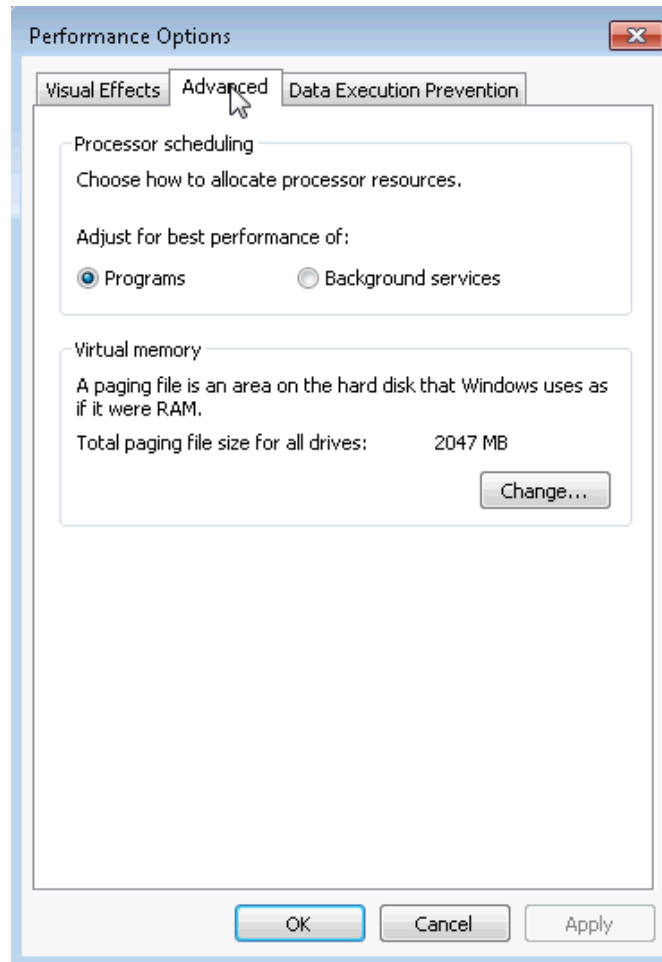
Lab – Managing Virtual Memory in Windows 7 and Vista

- b. The **System Properties** window opens. Select the **Advanced** tab and click **Settings** in the Performance area.



Lab – Managing Virtual Memory in Windows 7 and Vista

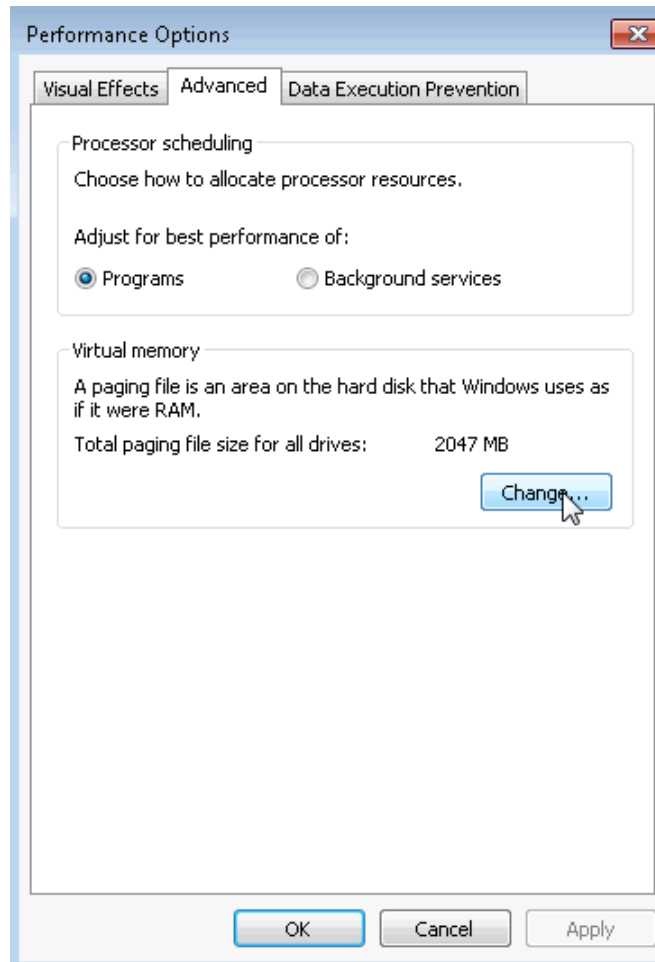
- c. The **Performance Options** window opens. Click the **Advanced** tab.



What is the current size of the virtual memory (paging file)?

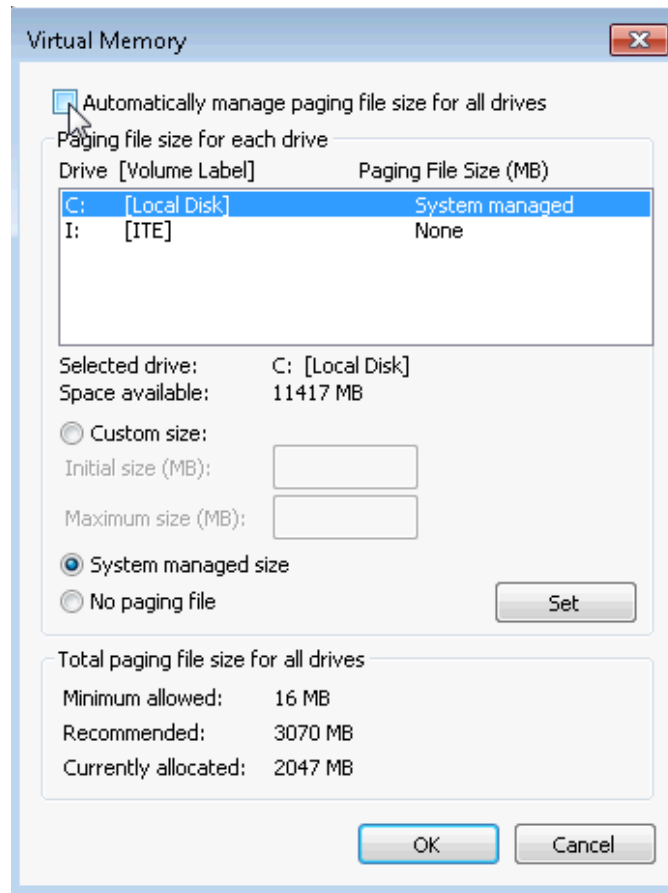
Step 2: Make virtual memory changes.

- a. Click **Change** in the Virtual memory area to open the **Virtual Memory** window.



Lab – Managing Virtual Memory in Windows 7 and Vista

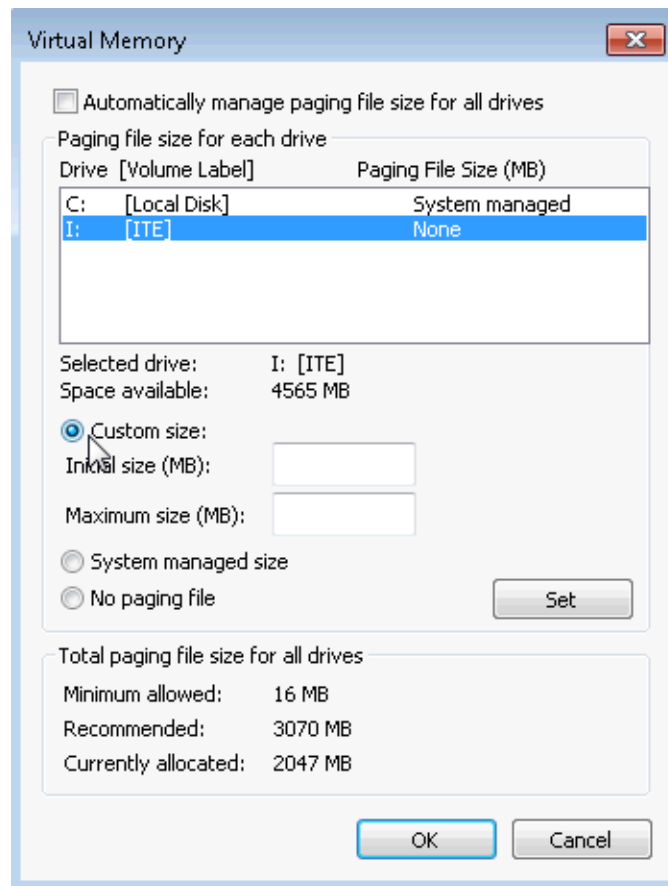
- b. Remove the check mark from **Automatically manage paging file size for all drives**.



What Drive [Volume Label] contains the paging file?

Lab – Managing Virtual Memory in Windows 7 and Vista

- c. Choose the **I:** drive. Select the **Custom size:** radio button.

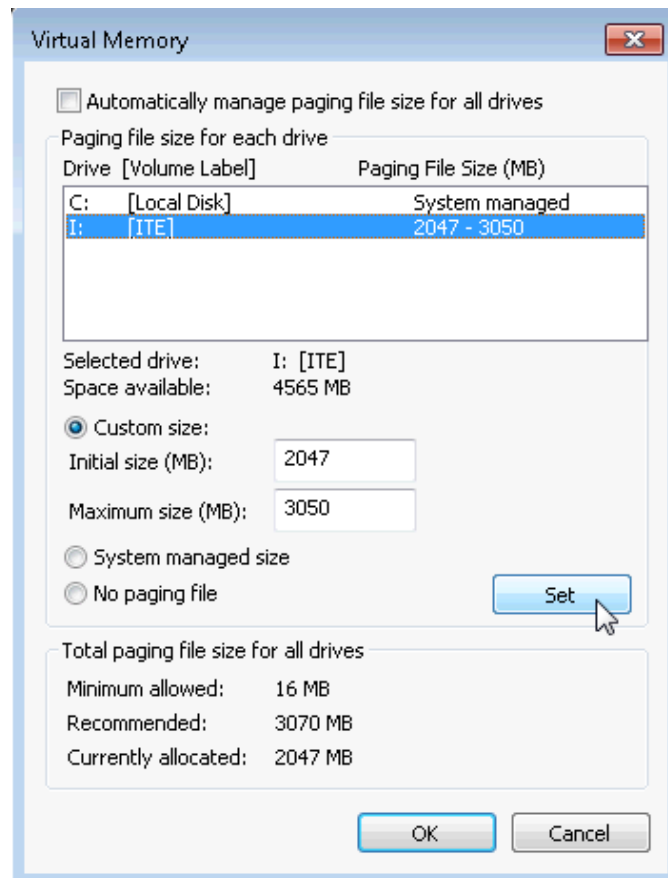


Note: Your drive letter and volume may be different than the example. Replace I: with the drive letter for your second partition on your PC.

What is the recommended paging file size for all drives?

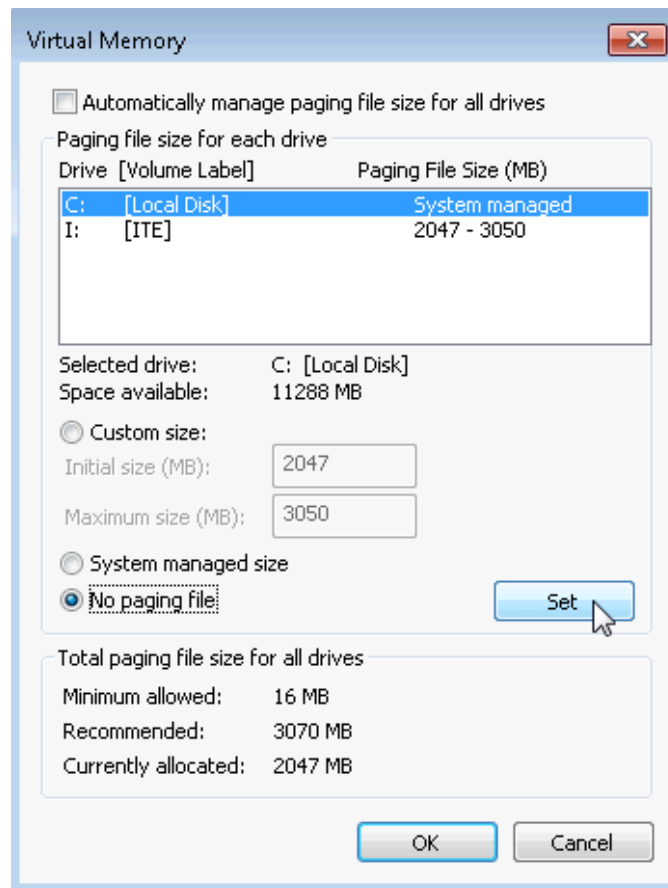
Lab – Managing Virtual Memory in Windows 7 and Vista

- d. Enter a number smaller than the recommended file size in the **Initial size (MB)**: field. Enter a number that is larger than the Initial size but smaller than the recommended file size in the **Maximum size (MB)**: field. Click **Set**.

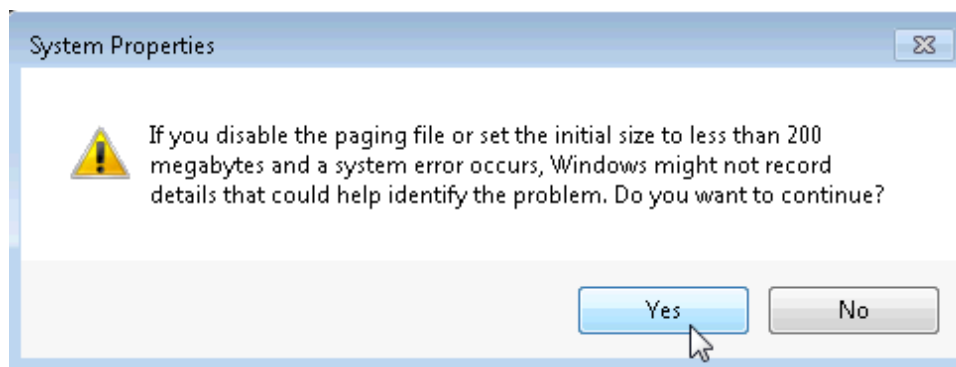


Lab – Managing Virtual Memory in Windows 7 and Vista

- e. Select the **C:** drive. Select the **No paging file** radio button, and click **Set**.



- f. The System Properties warning message displays. Click **Yes**.



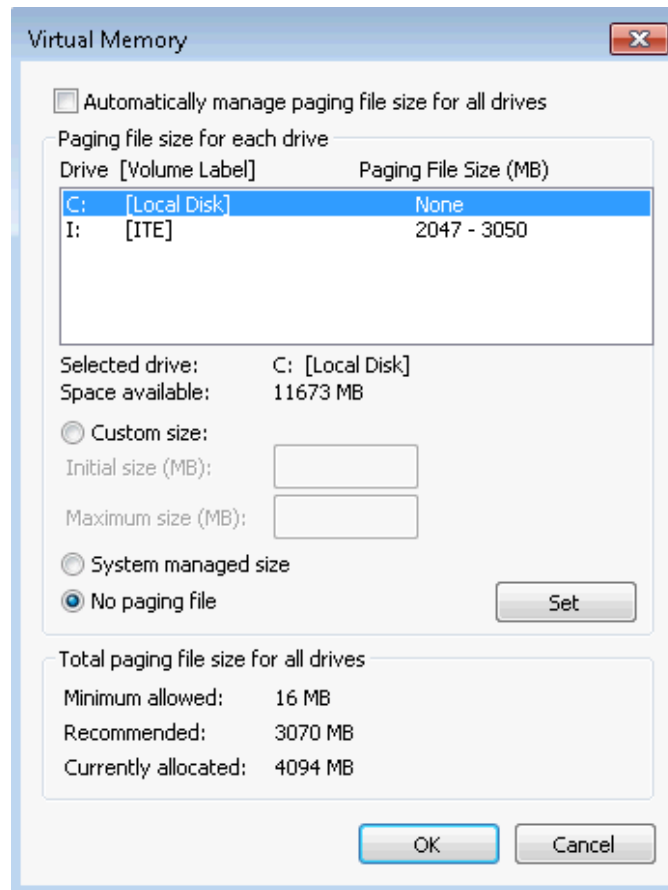
- g. Click **OK** on the **Virtual Memory** window to accept the new virtual memory settings.
h. Click **OK** on the **Performance Options** window to close it.
i. Click **OK** on the **System Properties** window to close it.

Step 3: Navigate back to the Virtual Memory window to verify changes.

- a. The **System Properties** window opens. Select the **Advanced** tab and click **Settings** in the Performance area.

Lab – Managing Virtual Memory in Windows 7 and Vista

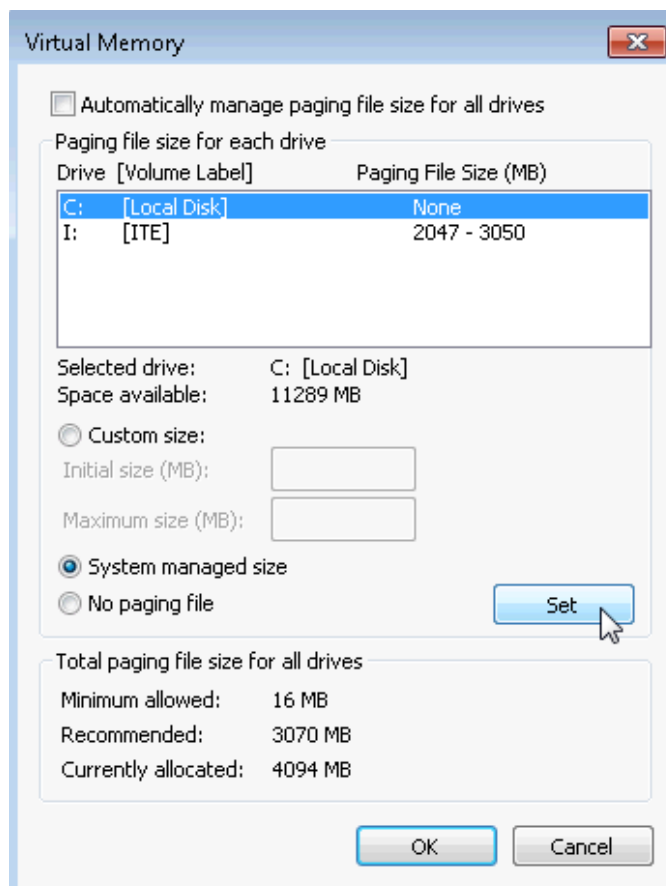
- b. The **Performance Options** window opens. Select the **Advanced** tab, and click **Change**.
- c. The **Virtual Memory** window opens displaying the new paging file information. Verify that your changes have been made.



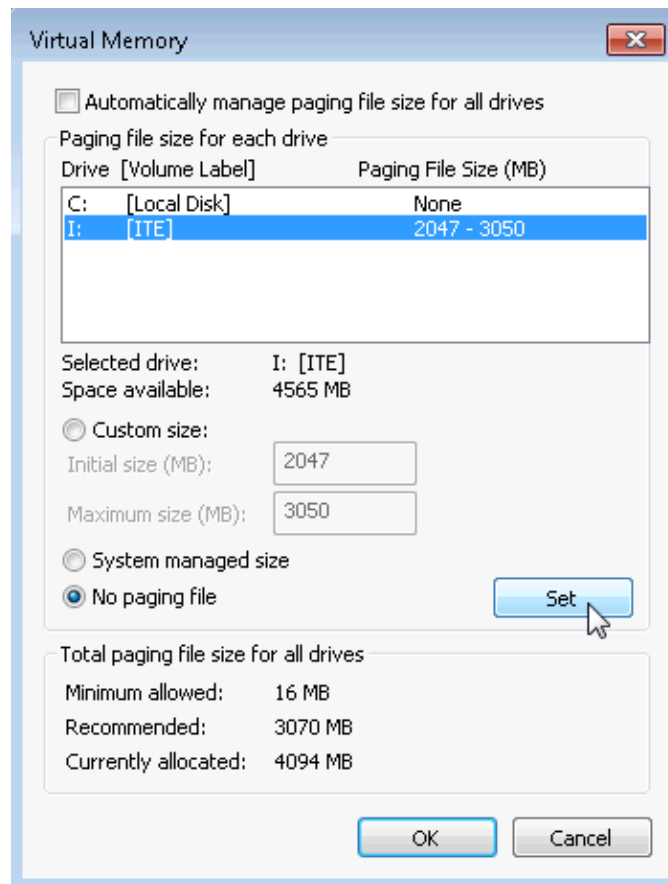
What Drive [Volume Label] contains the paging file?

Step 4: Reset the virtual memory back to the original settings.

- a. Select drive **C: [Local Disk]** > **System managed size** > **Set**.

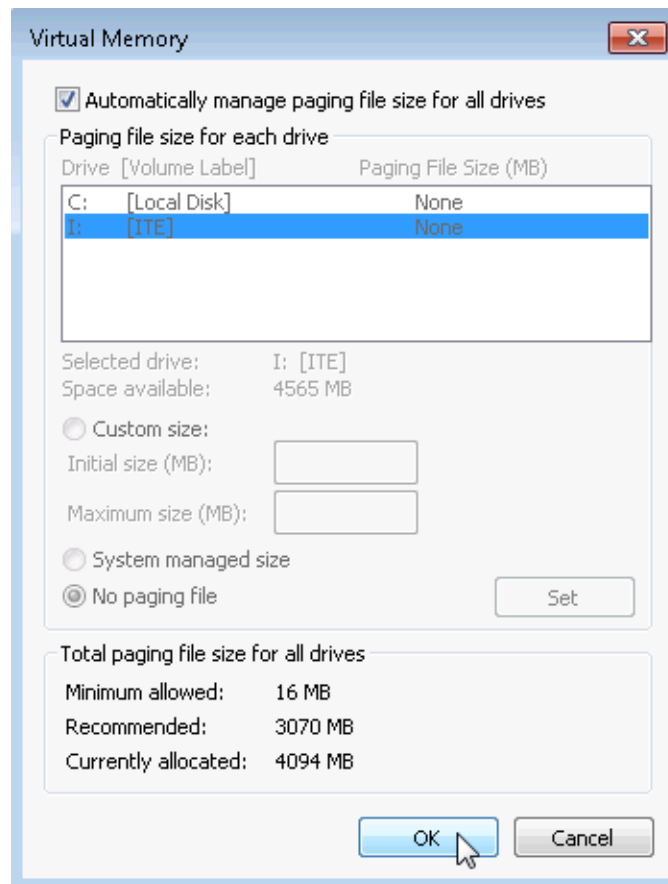


- b. Select I: > No paging file > Set.

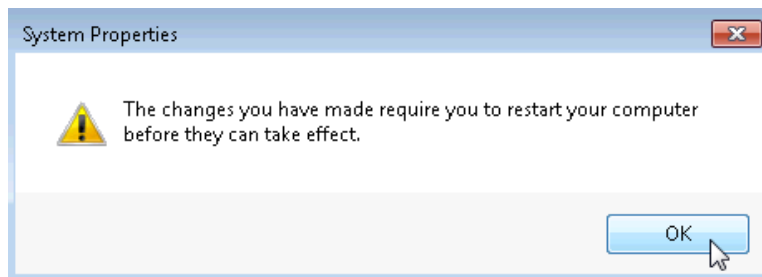


Lab – Managing Virtual Memory in Windows 7 and Vista

- c. Check **Automatically manage paging file size for all drives**, and click **OK**.



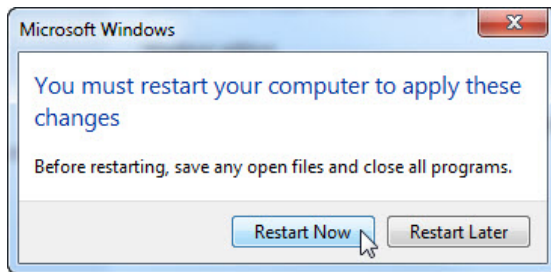
- d. The **System Properties** window opens informing you that a restart is required before changes will take effect. Click **OK**.



- e. Click **OK** to close the **Performance Options** window. Click **OK** to close the **System Properties** window.

Lab – Managing Virtual Memory in Windows 7 and Vista

- f. The warning message displays: **You must restart your computer to apply these changes.** Click **Restart Now.**



Reflection

Why would you ever change the default virtual memory page file settings in Windows?